

New Leaders Share Passion for Women's Fund

From the outside, Marilyn Obermiller and Shelly Bauerly Kopel may seem very different. Marilyn, a long-time community volunteer leader with a health care background, is the seasoned veteran, having worked with numerous nonprofit organizations by providing stability and a voice of experience. Shelly, co-owner and managing partner with Venture Allies and mother of two young children, brings advanced education and the energy of youth.

But on the inside, these women are not so different. Both share the passion and vision for the mission of the Central Minnesota Community Foundation's Women's Fund: to create and support programs that enhance the lives of all women and children, involving women as leaders and donors in the process.

Marilyn and Shelly took over as co-chairs of the Women's Fund at the beginning of the year. When Shelly heard the facts like 70 percent of all those living in poverty are women and children (including 4,000 children in our community), and two-thirds of young women in Minnesota will be minimum wage earners as adults, she was motivated to find out more. For Marilyn, it has

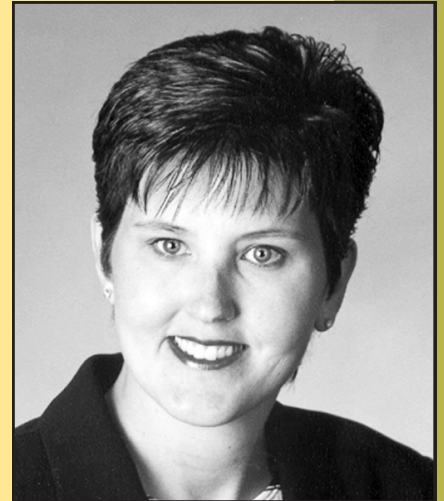
been a strong desire to empower women and to help educate women and girls so they realize they can make a difference. Both say, "How can we not be involved?"

A two-fold goal, with both a financial capital component as well as a social capital component, has been set for the Women's Fund. They want to raise \$1,000,000 by the end of 2006 and have 1,000 people involved. So far they've raised nearly \$500,000 and have nearly 400 connected to the effort. The fund focuses on three key areas: middle school girls, women in transition and elder women.

"Our purpose is very clear, we are women helping women. Women need to be educated on their importance in our communities. We have the power to do a lot," Marilyn explained.

Added Shelly, "This work touches my mind, my heart and my spirit. There's a need and a challenge. The volunteers are committed and CMCF is a strong supporting organization. How can we give it any less?"

For more information about the Women's Fund, call (320) 253-4380 or visit communitygiving.org.



Shelly Bauerly Kopel



Marilyn Obermiller

It's not too late to register!



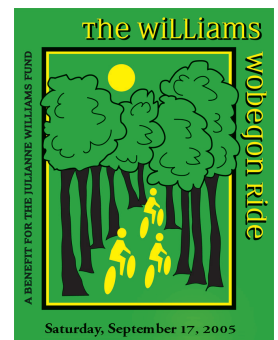
**Women on Stage ...
at the Ranch**
Tuesday, June 28, 2005

This third annual event will be held at the home of Jerry and Elaine Bauerly from 5:30 - 8:30. Cost is \$40. Call (320) 253-4380 to register or pick up tickets at Byerly's or St. Cloud Hospital Gift Shop.

Mark your calendars!

**The Second Annual
Williams Wobegon Ride**
Saturday, Sept. 17, 2005

The nine-mile ride begins at the trailhead in St. Joseph. Bikers will ride to the trailhead in Avon where they will either be shuttled or ride their bikes back to St. Joseph. Funds raised will go to the Julianne Williams Fund. Watch the St. Cloud Times or call (320) 253-4380 for more details.



The St. Cloud Times/Style Magazine is a proud supporter of the Women's Fund and its mission.